

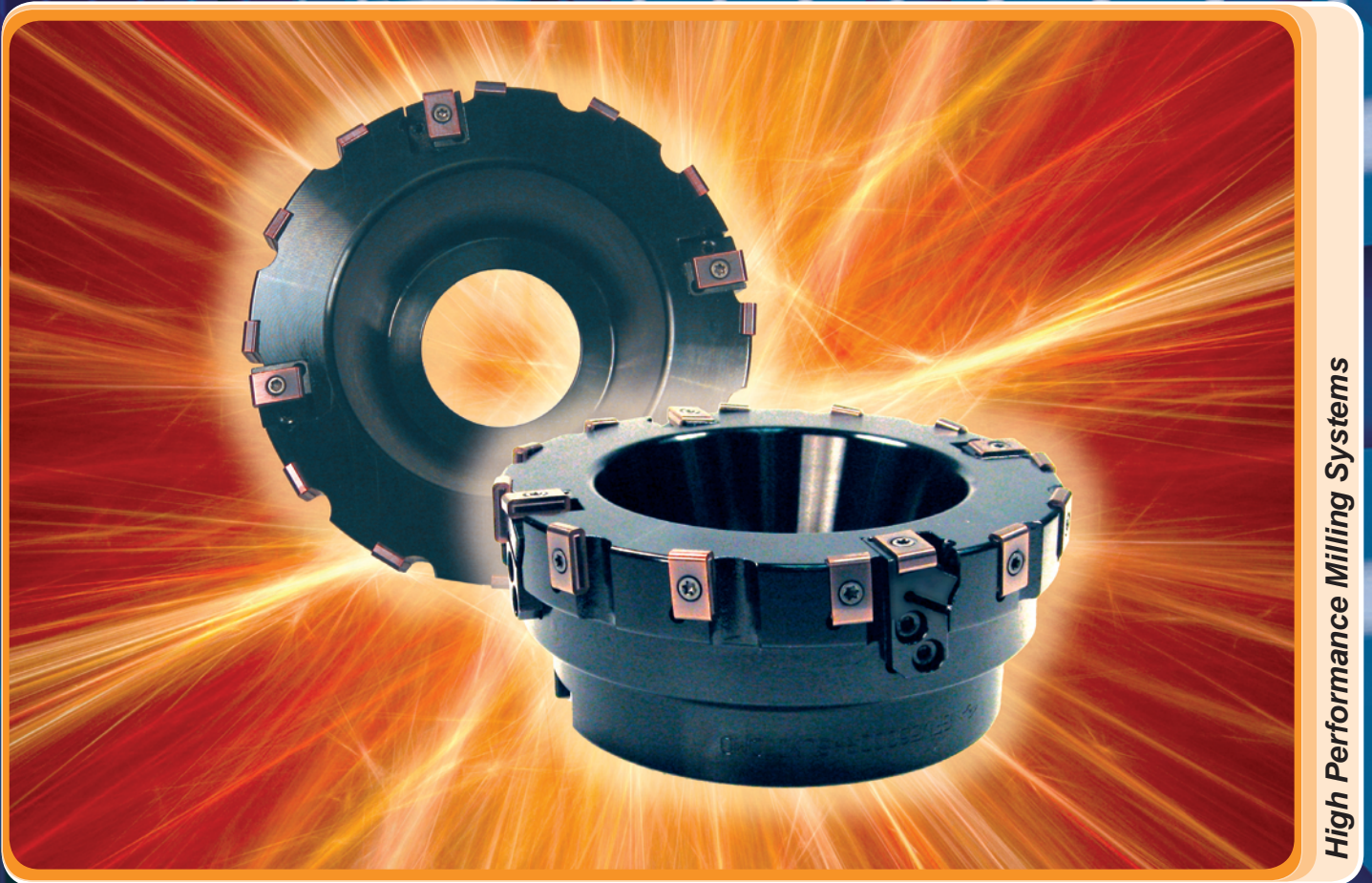
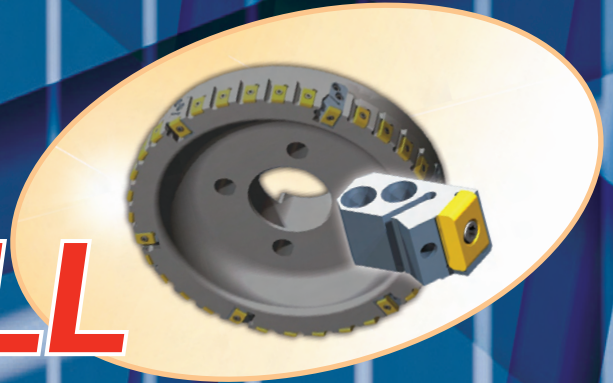


SUMITOMO

CARBIDE - CBN - DIAMOND

SumiMill

GOALMILL



High Performance Milling Systems

Milling cutter for roughing & finishing of cast iron



SumiMill GOALMILL

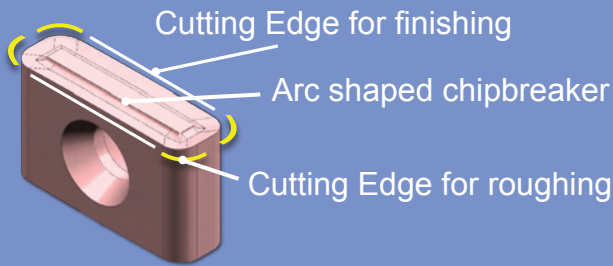
for cast iron roughing & finishing



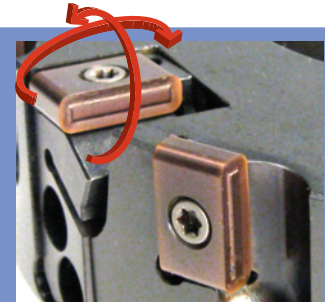
Features & Benefits

- Excellent surface finish capabilities
- Consists of fixed pocket inserts on the periphery
- Cartridges adjust easily and use the same insert as the periphery pockets
- All LNGX inserts have 8 cutting edges (12 when used with both right and left hand cutters)

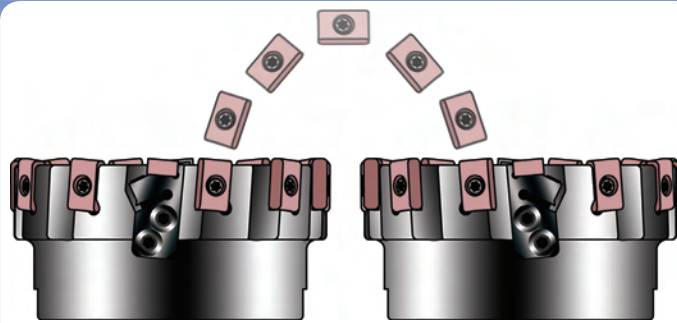
Insert Features



Four indexes can be used in the periphery pocket if the insert is rotated.



Flip the insert on its side and four indexes can also be used in the finishing cartridge.



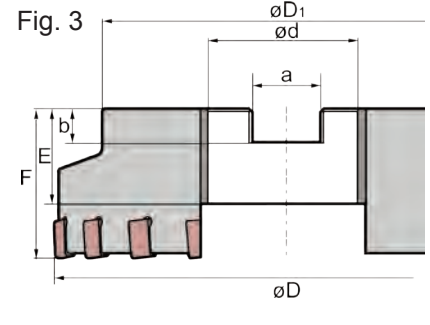
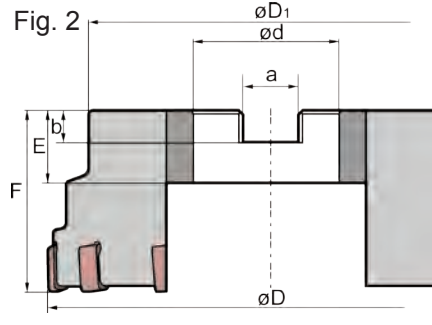
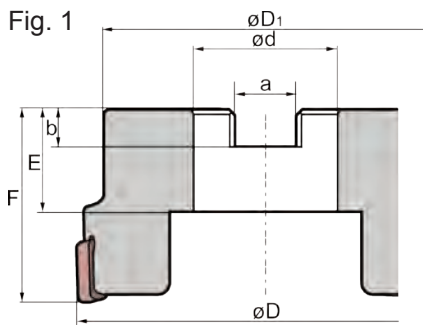
By switching the insert to a left hand cutter, **FOUR MORE ROUGHING EDGES** can now be used. A total of 12 indexes are possible when using both right and left hand cutters.*

*Left-handed cutters are made to order



Master Tool can provide custom-made milling cutters to accommodate your specific applications.

Roughing <50Rz	Semi-finishing <18Rz	Finishing <12.5Rz
45° 	45° w/wiper 	90° 



GOALMILL Cutter Bodies

Catalog Number	Stock	Dimensions (inch)							# of Teeth		Fig.	Effective Cutting Dia.
		ϕD	ϕD_1	ϕd	a	b	E	F	Roughing	Wiper		
GFV54000R	●	4.000	3.380	1.500	0.638	0.385	1.060	2.000	10	2	1	3.342
GFV56000R	●	6.000	4.880	2.000	0.761	0.438	1.000	2.500	12	4	2	5.342
GFV58000R	●	8.000	6.040	2.500	1.136	0.560	1.595	2.500	20	4	3	7.342

NOTE: Left-handed cutters are made to order

GOALMILL Inserts & Hardware

Catalog Number	Stock	Dimensions (inch)				Insert Screw*	Insert Wrench
		L	W	T	R		
LNGX160516PNFN-W-K244L9	●	0.625	0.375	0.187	0.063	BFTX03588	TTX15W
LNGX160516PNFN-W-K246L9	●						

*Torque specifications for insert screw= 26.5 in/lbs.

Cartridge & Hardware

Wiper Cartridge*	Cartridge Mount Screw	Wrench for Cartridge Mount Screw	Axial Adjustment Screw	Wrench for Adjustment Screw
GFVK5R	BX0418	LT15	ED090225E	TTX15W

*Insert not included with cartridge

Micro Adjustment:

- Check each of the fixed pocket milling inserts to find the one at the highest setting.
- Load the wiper cartridges into the face mill body and torque the cartridge mount screw
- Adjust the wiper cartridge using the axial adjustment screw so that it is .0010" ~ .0012" above the highest fixed pocket milling insert



Recommended Cutting Conditions

Gray Cast Iron			
Grade	SFM	D.O.C.	IPT
K244L9	450~1150	0.004~0.030	0.004~0.015
K246L9	400~650		

Ductile Cast Iron			
Grade	SFM	D.O.C.	IPT
K244L9	450~800	0.004~0.030	0.004~0.015
K246L9	400~600		

*Greater depths of cut (up to 4mm) possible if wiper cartridges are removed.



SUMITOMO

CARBIDE - CBN - DIAMOND

Sumitomo Electric Carbide, Inc.

Headquarters

1001 Business Center Drive
Mount Prospect, IL 60056-2181
P.O. Box 545, Mt. Prospect, IL 60056-0545
Phone: (800) 950-5202
Phone: (847) 635-0044
Fax: (847) 635-7866
<http://www.sumicarbide.com>

Detroit Branch

14496 Sheldon Road #230
Plymouth, MI 48170
Phone: (800) 239-5177
Phone: (734) 451-0200
Fax: (734) 451-5338

Cincinnati Branch

4450 Carver Woods Drive
Cincinnati, OH 45242-5545
Phone: (800) 879-1887
Phone: (513) 891-4000
Fax: (513) 794-2911

Huntsville Branch

5650 Sanderson Street NW
Suite J
Huntsville, AL 35805
Phone: (256) 895-2845
Fax: (256) 895-3150

Torrance Branch

21221 South Western Avenue
Suite 200
Torrance, CA 90501
Phone: (800) 950-5202
Fax: (310) 782-0211

Sumitomo Hardmetal Mexico (SHMM)

Avenida Universidad #1703-A
Fracc. Lomas del Campestre
Aguascalientes, AGS Mexico
Phone: 011-52-449-993-2740
Fax: 011-52-449-993-2753

